



Shrewsbury School

SHREWSBURY SCHOOL

SIXTH FORM ENTRANCE EXAMINATION 2014

History of Art (1 hour)

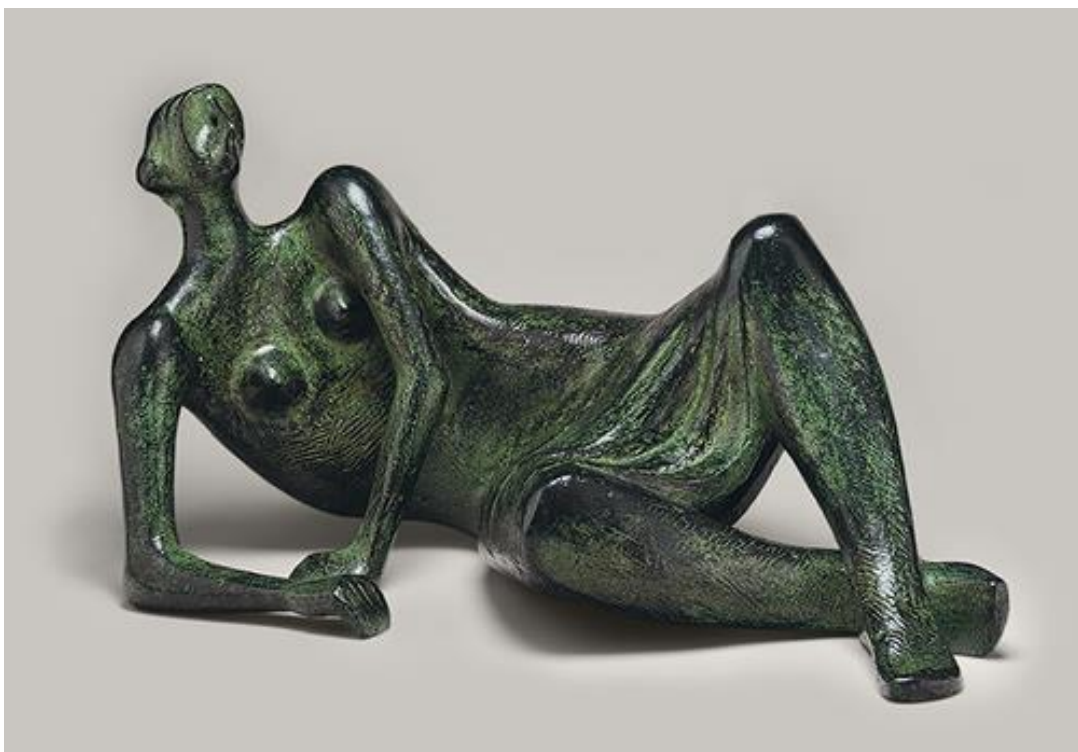
Instructions to candidates:

- Answer both questions on lined paper.

- 1) Visual Analysis: - respond to the three images below and write as fully as you can about what you see.



Jean-Francois Millet *The Gleaners*, 1857. Oil on canvas



Henry Moore, *Reclining Figure No. 4*, 1954-5. Bronze



The Queen's House, Greenwich, built between 1616–1619 for Anne of Denmark

- 2) Write about any aspect of the visual arts that you find interesting. This could be the work of an artist or architect that you know well, or a particular painting, sculpture or building that you have seen or admired. It could equally be a recent trip to an exhibition or museum/gallery.